

# ALPHONSINE

page

21

Texte: G. SERREAU

Musique: B. GILLET

BOBBY

$\text{♩} = 60$

3 M ↓

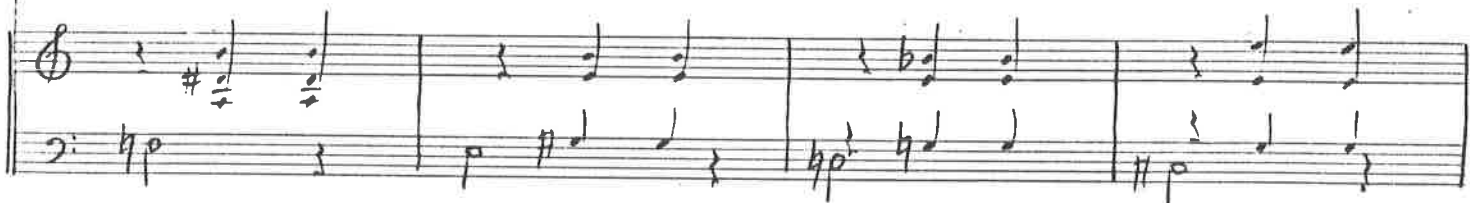
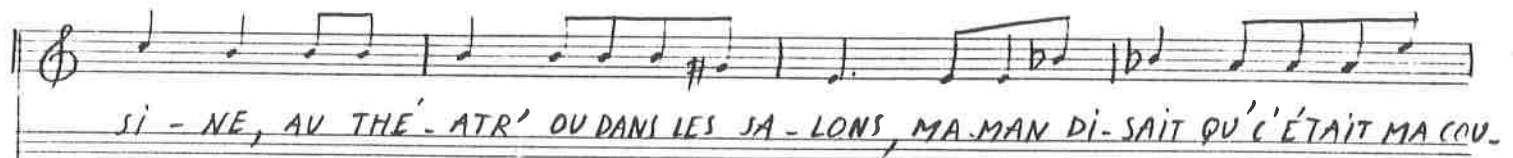
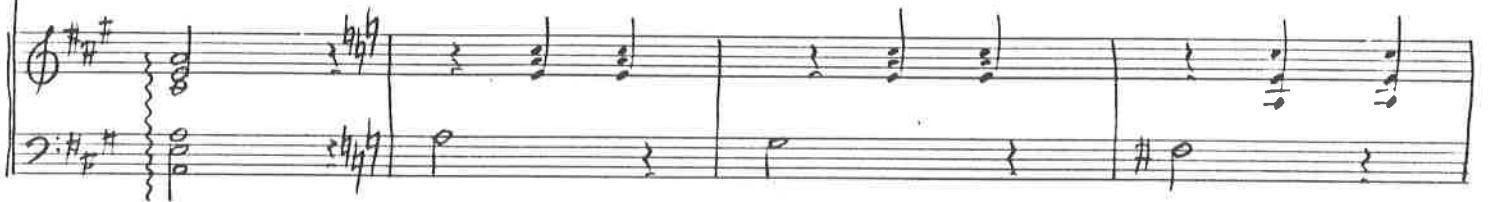
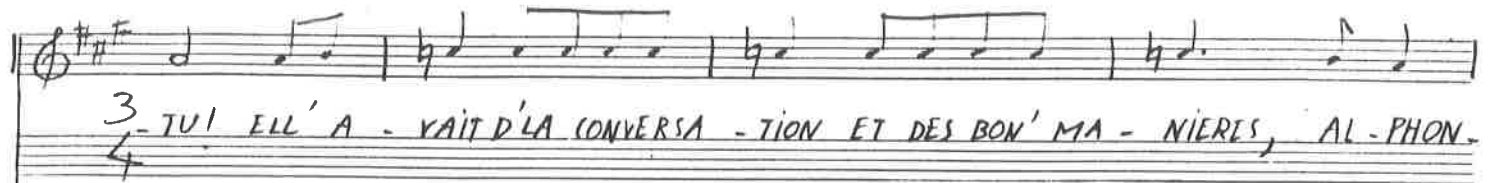
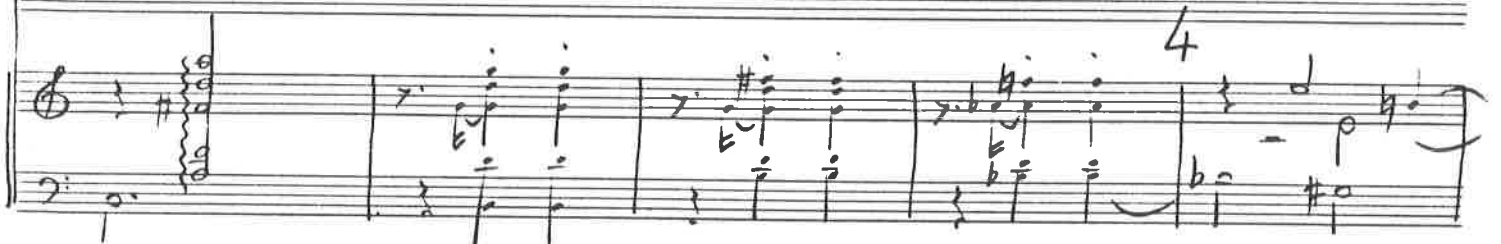
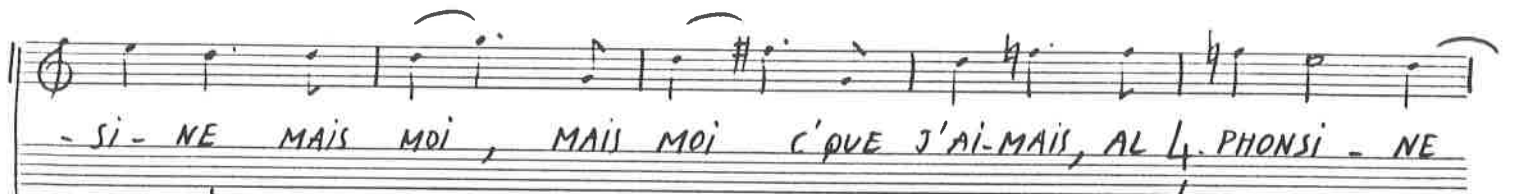
4 AL-PHONSIN' MA JOLIE ROUVI-NE ELL' A-VAIT UN TEINT D'ÉGLANTI-NE

4

LA BOUCH' EN FORM' DE PERLE FINE, DES P'TITS SEINS COM DES MANDA-RINES AL-PHON-SIN'

MA CÂLI - NE NOS JOLIS JEUX T'EN SOUVIENS - TU ? TUR-LU- TU -

## UN PEU PLUS ALLANT

RIT *rit* 7<sup>o</sup>

MA COQUI - NE MOI C'QUE J'AIMAIS C'EST D'ÊTRE VOIR NVE ! TUR-LU-TU.

The first system consists of a vocal line in treble clef and a piano accompaniment in bass clef. The vocal line begins with a half note G4, followed by quarter notes A4, B4, and C5. The piano accompaniment features a bass line with notes G2, B2, and D3, and a right hand with chords and single notes.

3-TU ! MAIS UN JOUR ELL'A DISPA - RU ALPHON-SINE MA JOLIE ROU -  
4

The second system continues the piece. The vocal line starts with a half note G4, followed by quarter notes A4, B4, and C5. The piano accompaniment includes a treble clef part with notes G4, A4, and B4, and a bass clef part with notes G2, B2, and D3.

- QUI-NE PARAIT QU'UN SOIR QUELQU'UN L'A VUE DANS UN BOR-DEL DE CONSTAN-

The third system concludes the piece. The vocal line starts with a half note G4, followed by quarter notes A4, B4, and C5. The piano accompaniment features a bass line with notes G2, B2, and D3, and a right hand with chords and single notes.

RIT *ritardando* T<sup>o</sup> 1<sup>o</sup>

P *piano* sub<sub>1</sub>

TI — NE... 4 AIN-SI FI-NIS - SENT LES A-MOURS

RIT *ritardando* T<sup>o</sup>

AIN-SI FI-NIT MON AL-PHONSI - NE MA MIER' ME LE DISAIT TOU.

JOURS "FILS MEFIE TOI DES BELL' ROUVINES"... AL-PHON. SIN' MA CÂLI - NE

21 / E

Handwritten musical score for a vocal line and piano accompaniment. The key signature is two sharps (F# and C#). The vocal line is written in a treble clef and includes the lyrics: "NOS JOLIS JEVX T'EN SOUVIENS - TU TUR LU - TU - TU". The piano accompaniment is written in a bass clef. The score includes dynamic markings such as *pp* and *mp*, and a *RIT* (ritardando) marking with a wavy line above the notes. The piece concludes with a double bar line.

29 Sept. 87